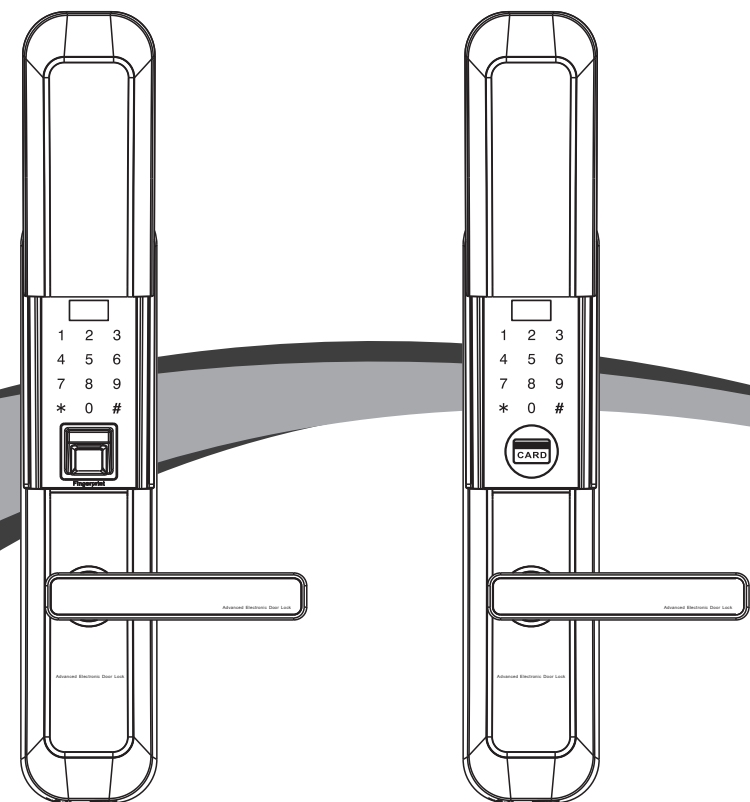


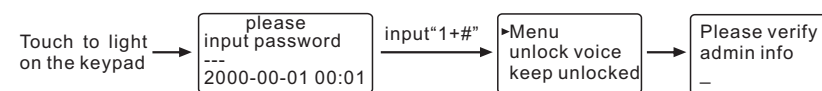
User Instruction



FM-03

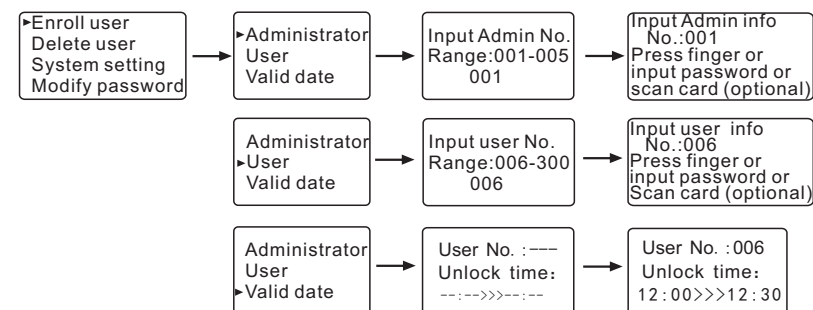
FM-03A

Quick Guide for Setting



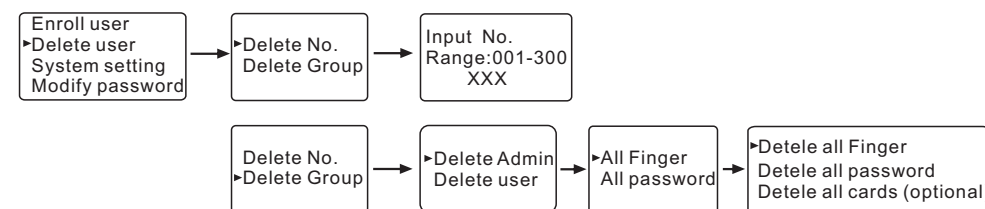
Remarks: 1. the default administrator password is "123456"
2. keypad: 2=up, 8=down, *=back/esc, #=enter
3. all the operation on the keypad need to press # to confirm

I. Enroll unlock information



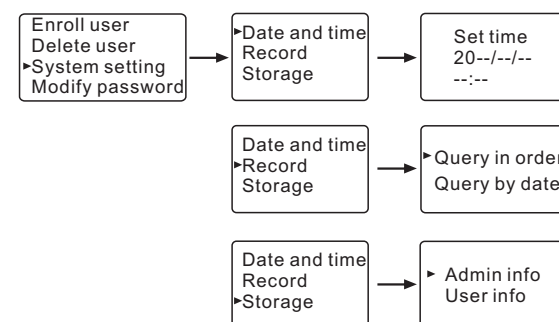
Remarks: password is 4-16 digits.

II. Delete information



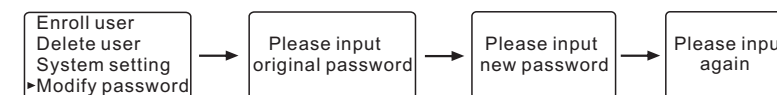
Remarks: It can delete the current administrator info. The default administrator password does not support delete function.

III. System setting



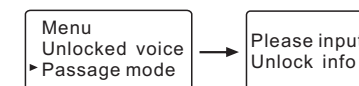
Remarks: 1. It can save 250 pcs user records.
2. It is loop record, when memory full it will delete old file.
3. Record shows info by the order from latest to the previous.

IV. Modify password



V. Keep unlocked

touch to light on keypad, then input "1+#" then choose "passage mode" as follows



To cancel this function, just press "#" on the keypad. or any user input unlock info to unlock one time, it will be canceled automatically.

VI. Default:

Long press DEL button on the back for 5 seconds, the system will default all the user parameters. The default password is 123456

VII. Others

- When input 5 times wrong unlock info, the system will be locked for 3 minutes.
- Anti-peep to password: user can put prefix and/or suffix to a correct password when somebody aside, it still can unlock the door.

Remarks:

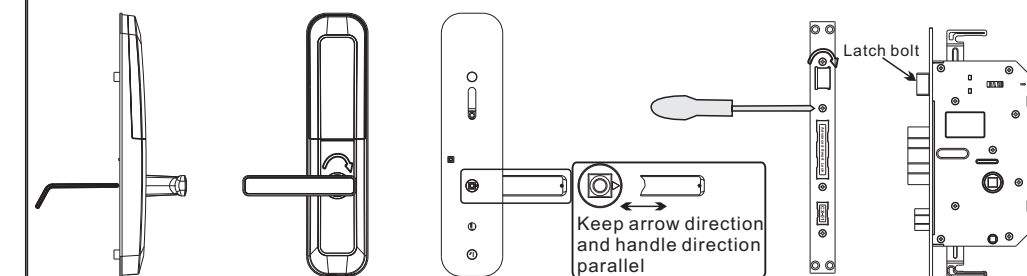
- Initial state: the default admin password is "123456", enter "123456" and open the door. The default password becomes invalid after the administrator information is enrolled.
- The password and card door lock is the same operation as the password and fingerprint door lock. Adding fingerprints are replaced by adding cards.

Technical parameters:

Power supply:	4.5v - 6.5v
Typical dynamic current:	<50μA
Operation current:	<250mA
Fingerprint or card capacity:	<= 300 groups
Password capacity:	<= 300 groups
Actuator:	DC micro-motor
Working temperature:	-10 C -- 70 C
Storage temperature:	-25 C -- 125 C
Working humidity:	5% -- 95%

Installation Steps:

- Stand outside the door and face it. Make sure the direction of smart door lock as well as the direction of the door unlocked. Then adjust the handle and the latchbolt.
Note: The revolution axis arrow is behind front plate. Before installation, make sure the direction of the arrow and handle towards same. If not, Don't put the key into or twist.



Loosen the screws inside handle by hex wrench

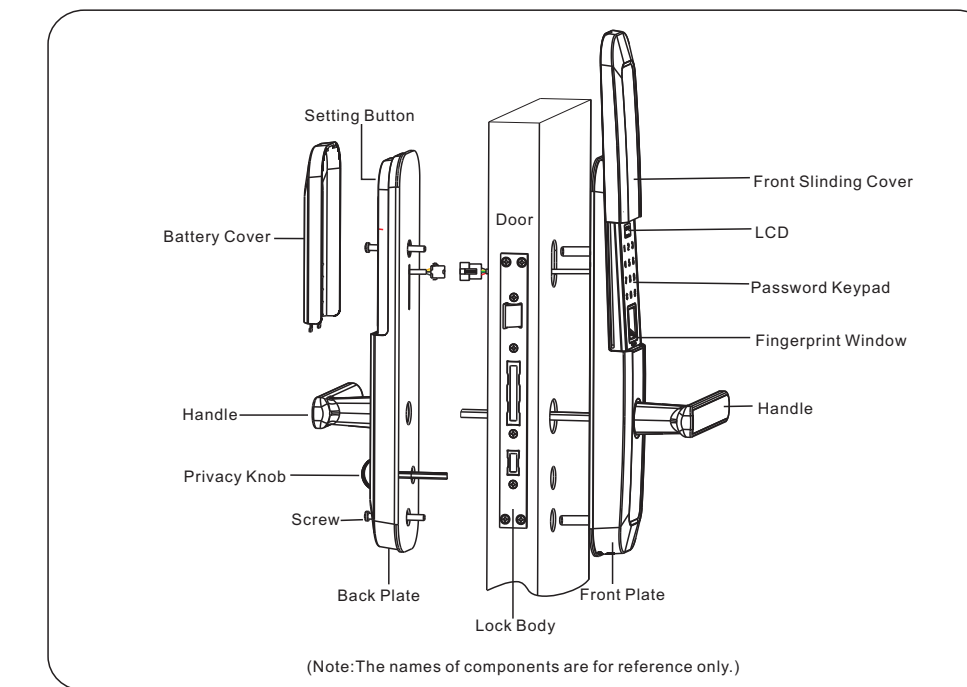
Take out handle and rotate 180°. Fix the screws.

Keep the arrow direction of revolution axis and the handle parallel. Or the door cannot be opened.

After the unlock direction confirmed, please adjust the direction of latchbolt if needed. Loosen the four screws in the strike plate, rotate the latchbolt 180°

- Adjust and install lock body. Then install front and back panel, and fix all screws.
- Install the face plate and strike plate, adjust the direction of latchbolt.
- Try to open and close the door, and screw up if smoothly.

Installation Structure Diagram



(Note: The names of components are for reference only.)